

THE SAWNEE HIGHLINER

Volume 44 • Issue 3

See a Streetlight Out? Please Report It.

Sawnee EMC maintains over 44,000 streetlights throughout our seven-county service territory. And although we have some of the most comprehensive preventative maintenance programs in the industry... light fixtures, bulbs, ballasts, and wires are just like anything else, they will fail over time and need to be repaired.

Our electric meters are designed to automatically notify us of an outage; but that is not the case with a streetlight...**someone must physically report any issues with a streetlight.** That is where we need your assistance. If you see a streetlight that needs to be repaired, please let Sawnee know about it so we can fix or replace it promptly.



Streetlight issues may be reported by:

- Our app, available at sawnee.com
- Online at sawnee.com/report-streetlight
 - Call 770-887-2363
 - Send a text to 678-999-8124
 - Chat at sawnee.com
- Email us at customerservice@sawnee.com

When reporting a streetlight outage online, simply complete the online form for a streetlight outage. If you have not downloaded our free app yet, please take time

Continued on page 3

CONTACT US

Web Address & Email:

www.sawnee.com

customerservice@sawnee.com

Business Office Hours:

Mon. - Fri. 8:00 a.m. - 5:00 p.m.

Physical Address:

543 Atlanta Highway
Cumming, GA 30040

Customer Call Center:

Mon. - Fri. 7:00 a.m. - 7:00 p.m.

Saturday - 8:00 a.m. - 5:00 p.m.

Phone: (770) 887-2363

Fax: (770) 234-6722

Text: (678) 999-8124

TDD: (770) 781-4271



QUOTABLE QUOTE

Never let the fear of striking out keep you from playing the game."

— Babe Ruth

This institution is an equal opportunity provider and employer.

The Good Kind of Audit



With winter not quite over and springtime looming on the horizon, we'd like to remind you about **free** services that Sawnee EMC offers that can help you boost the energy efficiency of your home and save money on your electric bill.

Sawnee EMC is your trusted energy partner, and we believe savings and efficiency are within reach for everyone, and we want to help you get there. That's why we offer free home energy audits.

An energy audit provides a view of your entire home's efficiency. Understanding how your home uses energy can help determine the best ways to adjust energy consumption, improve problem areas and ultimately keep more money in your wallet. You could say this is the good kind of audit.

One of the greatest values of an energy audit is helping you understand how you use electricity and more importantly, identifying ways to use it more efficiently. Energy audits are just one of the many perks of your co-op membership, so we hope you'll take advantage of this valuable service.

If you're looking for more ways to save, check out our additional efficiency offerings such as our rebate program for energy efficient upgrades; learn more at sawnee.com/rebates. These programs and services are designed with our members in mind, putting the power to save in your hands.

How Does it Work?

First, request the energy audit by contacting our Customer Call Center at 770-887-2363, customerservice@sawnee.com or text 678-999-8124. The audit is conducted at your home by one of our trained energy advisors.

Our energy advisor conducts a walk-through of your home, examining energy use and identifying potential problem areas. We will look at specific elements of your home impacting energy use such as your HVAC system(s) as well as doors, windows and insulation levels during the room-by-room assessment. During the energy assessment, the advisor will ask questions about your energy usage habits and review past energy bills and usage.

Finally, the advisor will provide you with a detailed evaluation. This is a report with a description of your energy usage, recommendations regarding energy consumption and steps you can take to improve efficiency and save money.



Streetlight Out? *Continued from Page 1*

to do so. Not only can you easily report either a meter or street light outage, but you will have access to billing and payment functions as well as information about the amount of electricity your home or business is using. The app provides a suite of helpful tools designed to make your life easier and provide useful information at your fingertips. To download the app, simply search “Sawnee EMC” in the App Store or Google Play.

Thank you, in advance, for taking the time to let us know about a streetlight outage in your area. We are glad to address any issue with streetlights in your area or any aspect of your Sawnee EMC electric account swiftly and to your satisfaction.

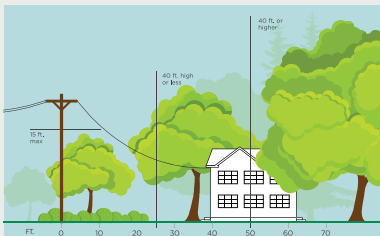
3 Ways to Help Limit Tree Trimming

Did you know we are required to trim trees and other types of vegetation that grow too close to our power lines?

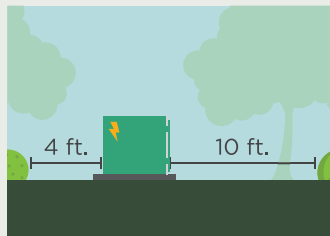
We know you love your trees, and we will do our best to limit any tree trimming activity.

Here's how you can help:

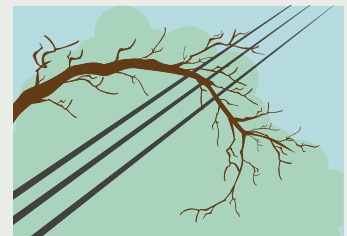
1. Plant trees in the right place. Trees that will be <40 ft. should be planted at least 25 ft. away from power lines (>40ft. should be at least 50 ft. away).



2. Don't block pad-mounted transformers. Plant shrubs at least 10 ft. away from transformer doors and 4 ft. from transformer sides.



3. Report dangerous branches. If you spot a tree or branch that is dangerously close to power lines, please let us know.



Trimming improves safety for all.

Let's work together to enjoy the beauty of trees and reliable electricity.

A Balanced Energy Mix Equals a Higher Degree of Reliability



The winningest basketball teams in history are ones that are consistent and have players with varying skills and abilities. Some are better at shooting three-pointers, some play great defense. Having a balanced mix makes the team a powerhouse on the basketball court. The ways of keeping electricity reliable are a bit like that too.

The electricity team first requires a foundation of consistent energy sources that can be put in the game any time they are called on. Having enough “always available” fuel sources like nuclear power, natural gas and coal can ensure consistent power generation.

Just like a team that needs different players for different situations, our power grid requires multiple sources to keep the grid running smoothly. Relying solely on one player to win every game is not an effective strategy. Similarly, using a single fuel source for electricity generation poses a significant risk to energy reliability. Natural disasters, geopolitical tensions or unforeseen disruptions can severely impact the supply chain of a particular fuel source. A diverse mix of energy sources ensures that the grid remains operational even in the face of unexpected challenges.

A diverse energy mix also enhances grid flexibility by accommodating the intermittent nature of some resources like solar. It’s awesome when the sun is shining bright, but what if it’s nighttime or a cloudy day? That’s where the other resources, like nuclear, hydro, natural gas and coal can step up and keep the team moving forward.

Diverse fuel sources contribute to the stability and reliability of the electric grid. The different sources have varying characteristics, including generation patterns, responsiveness and capabilities. This diversity allows for a more balanced and resilient energy system that can adapt to fluctuating demand and unforeseen circumstances. Having a mix of these energy sources is like having a team with different skills to handle various situations and scenarios.

As the staff of Sawnee EMC continues to work on the innovations of tomorrow, the key to keeping our electricity reliable right now is ensuring a diverse “team” of fuels. Each one brings something special to the table, and together, they make sure we have the power we need, whenever we need it.

If you have any questions, please contact our Customer Call Center at 770-887-2363

Here’s WATTS Cookin’ Easy Cherry Cobbler

Ingredients:

1 cup Self Rising Flour

1 cup Milk

1 cup Sugar

1 21-ounce can Cherry Pie Filling

Instructions:

Set oven to 350 degrees; place butter in a cast iron/baking dish and set in oven to melt while it preheats. Combine flour and sugar and then slowly add milk and mix together until smooth. Once oven is fully preheated and butter is melted, pour mixture into the dish. Spoon pie filling evenly on top of flour mixture. Bake 40-45 minutes or until crust is golden brown. Serve warm with vanilla ice cream, if desired.



👉 Thanks to Diane Green for the recipe! Do you have a recipe to share with us? If we print it, we’ll credit your account \$5.00. Send your favorite recipe to marketing@sawnee.com.