

THE SAWNEE HIGHLINER

Volume 40 • Issue 3

How Much Are You Paying For Natural Gas?

Sawnee EMC has never been prouder of its marketing relationship with True Natural Gas. True is consistently one of Georgia's lowest cost natural gas marketers. Additionally, True offers you an opportunity to receive natural gas from a trusted source and has been Sawnee's preferred natural gas provider for many years.

To see how True Natural Gas stacks up to the other natural gas marketers in Georgia, visit the Public Service Commission's website at www.psc.state.ga.us. You will see that True has been one of the top providers, with low standard fixed rates, for the majority of the past 12 months.

Additionally, True Natural Gas rewards their loyal customers. As consumer investigator Dale Cardwell says, **"They're not interested in gimmicks or sign-up tricks. True Natural Gas is my #1 choice for natural gas in Georgia."** The "True Rewards" program, which offers



incremental bill credits, is True's "thank you" to their loyal customers. The longer you stay with them, the more you save, and the savings are automatic.

Sign up today! Find out what it means to be True. Contact Sawnee EMC's Customer Call Center at 770-887-2363 or visit truenaturalgas.com.

Note: Sawnee EMC is not a certified natural gas marketer in the state of Georgia, but actively promotes the natural gas services of True Natural Gas as a value-added service to its members.

CONTACT US

Web Address & Email:

www.sawnee.com

customerservice@sawnee.com

Business Office Hours:

Mon. - Fri. 8:00 a.m. - 5:00 p.m.

Physical Address:

543 Atlanta Highway
Cumming, GA 30040

Customer Call Center:

Mon. - Fri. 7:00 a.m. - 9:00 p.m.

Sat. 8:00 a.m. - 5:00 p.m.

Phone: (770) 887-2363

Fax: (678) 947-3368

Text: (678) 999-8124

TDD: (770) 781-4271



QUOTABLE QUOTE

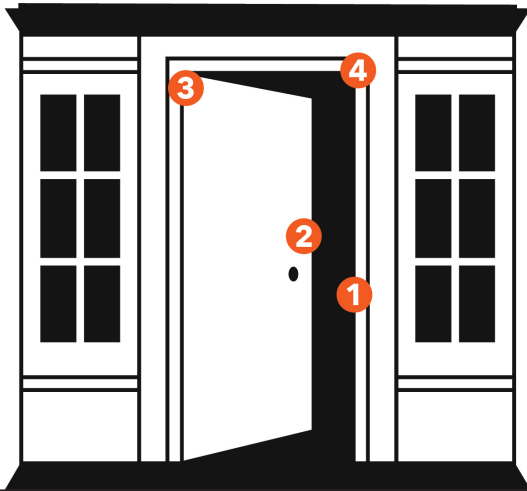
The person who can bring the spirit of laughter into a room is indeed blessed."

— Bennett Cerf

This institution is an equal opportunity provider and employer.

WEATHER STRIPPING DOORS

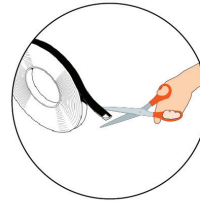
Capturing Energy Savings by Sealing Air Leaks



Save energy and seal air leaks by weather stripping exterior doors. How do you know if you need to weather strip? If you can see any amount of light between the door frame and the floor, weather stripping should be applied to eliminate energy waste. This DIY energy-saving project is relatively easy and inexpensive depending on the type of materials selected. The most common weather stripping material is self-adhesive foam strips, although rubber, vinyl, metal, or a combination of materials may also be used.



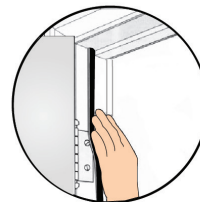
1 CLEANING SURFACES - Clean the door and door jamb to be weather stripped. For best results, weather stripping should be applied to clean, dry surfaces above 20°F.



3 CUTTING FOAM - Cut long pieces of self-adhesive weather stripping material (foam, vinyl, etc.) for each side of the door jamb and door.



2 MEASURING DOOR & DOOR JAMBS - To ensure greater accuracy, measure your space twice before cutting the material. It is best to plan for one continuous strip for each side of the door and door jamb.



4 APPLYING WEATHER STRIPPING - Peel back the self-adhesive foam. Apply one continuous strip of material snugly along each side. Make sure the weather stripping meets tightly at the corners and is pressed firmly onto the door and door jamb. The material should compress tightly between the door and door jamb, without making it difficult to shut.

SOURCE: Department of Energy

Sawnee Offers Members a Choice of Load Management Options

For decades, Sawnee EMC members have participated in our Load Management program, which involves a radio-controlled switch being connected to an outside HVAC unit. This program remains very popular, and works perfectly for most Sawnee EMC members.

To complement this traditional program, and offer another option to our members, we introduced an additional Load Management program called “Sawnee Smart Savers.” The Smart Savers Program utilizes a participant’s “smart thermostat” to serve as the load control device during times of peak energy demand, when wholesale electricity prices are at their highest. A Sawnee EMC residential member may participate in either of these programs, but is not allowed to participate in both. Below are the details of each program.



1 Smart Savers Program

On Load Management days, when the demand for energy is high, Sawnee will communicate with the Wi-Fi connected thermostat to put the HVAC system in energy conservation mode for a period of time. For each enrolled thermostat, Sawnee members will receive a total of \$36, in \$12 increments, on their July, August and September billing statements. Enrollment details and restrictions are available at sawnee.com/smartsavers.



2 Load Management Switch Program

This is our traditional HVAC switch program, which has over 40,000 participants. During times of peak energy demand, Sawnee sends a radio signal to the switch that temporarily cycles off the outside AC compressor for approximately seven (7) minutes out of 30 minutes. The system fan inside the home continues to run and circulate air, which helps keep a constant temperature in the home. For each switch installed, participants receive a credit of \$36 per summer, per HVAC unit. The credits are applied, in \$12 increments, on the June, July and August billing statements. Sign up online at sawnee.com/switch.

Load Management is one of the easiest ways for members to become active in their cooperative and save money on their monthly billing statements during the summer. Contact our Customer Call Center at 770-887-2363, customerservice@sawnee.com or text 678-999-8124. We will be glad to help you decide which program fits you best.

Can You Dig It? Call 811 to Find Out



If you are planning to complete excavation work on your property, be sure to call Georgia 811 at least 48 hours in advance so that your underground utilities can be marked. Even if you are “almost positive” that there are no underground lines in your area, it is always best to call. Remember, the service is FREE, and it is the law!

Be safe, not sorry. Before you begin digging, please call “811” for reasons such as your safety and preventing damage and utility outages. A few examples of homeowner digging projects may include landscaping, fence installation, planting trees, or anchoring supports for decks and swing sets.

Allow up to 48 hours for marking utilities. Respect and protect the marks and then excavate carefully. For more information, be sure to visit georgia811.com.

Here's WATTS Cookin' Scrambled Egg Muffins

Ingredients:

<i>½ lb. pork sausage</i>	<i>½ tsp. salt</i>
<i>12 eggs</i>	<i>¼ tsp. black pepper</i>
<i>½ cup onion, chopped</i>	<i>¼ tsp. garlic powder</i>
<i>½ cup green bell pepper, chopped</i>	<i>½ cup shredded cheddar cheese</i>

Instructions:

Preheat oven to 350 degrees. Lightly grease 12 muffin cups or line with paper liners. Cook sausage over medium-high heat until no longer pink. Drain. Beat eggs in a large bowl. Stir in onion, green pepper, salt, pepper and garlic powder. Mix in sausage and cheddar cheese. Spoon 1/3 cupfuls into muffin cups. Bake for 20-25 minutes.



👉 Thanks to Jennifer Stewart for the recipe! Do you have a recipe to share with us? If we print it, we'll credit your account \$5.00. Send your favorite recipe to marketing@sawnee.com.