

# THE SAWNEE HIGHLINER

Volume 38 • Issue 12

## KEEP IT SAFE THIS HOLIDAY SEASON

If you decorate for the holidays, please remember to be safe. Carefully follow the instructions concerning the safe installation and use of all decorative electrical products. Below are a few tips to keep your home bright and festive this holiday season.

- Use lights and other electrical decorations that are certified by an independent testing laboratory such as "UL"
- When decorating outdoors, only use lights that are approved for outdoor use
- Consider using LED decorations, which create much less heat and use less energy
- Carefully inspect each decoration before plugging it into an electrical outlet
- Look for frayed or cracked wires, which may cause electrical shock or fire
- Never nail or staple light strings or extension cords to exterior surfaces



- Do not allow children or pets to play with electrical decorations
- Turn off all electrical decorations before leaving home or going to bed and be sure to use a timer to control your energy cost

Have fun and enjoy this holiday season... just remember to be safe! Happy holidays from Sawnee EMC.

### CONTACT US

Web Address & Email:

[www.sawnee.com](http://www.sawnee.com)

[customerservice@sawnee.com](mailto:customerservice@sawnee.com)

Business Office Hours:

Mon. - Fri. 8:00 a.m. - 5:00 p.m.

Physical Address:

543 Atlanta Highway  
Cumming, GA 30040

Customer Call Center:

Mon. - Fri. 7:00 a.m. - 9:00 p.m.

Sat. 8:00 a.m. - 5:00 p.m.

Phone: (770) 887-2363

Fax: (678) 947-3368

Text: (678) 999-8124

TDD: (770) 781-4271



### QUOTABLE QUOTE

**Success is the result of perfection, hard work, learning from failure, loyalty, and persistence. "**

**— Colin Powell**

*This institution is an equal opportunity provider and employer.*

# Let the *Giving Season* Last All Year Long...



It only costs about 50 cents per month, yet all the spare change collected by the Sawnee Foundation's Operation Round-Up Program has made it possible to put almost \$3 million of charitable contributions back into our communities. These small donations add up and change the lives of so many who need a helping hand.

With the month of December upon us, many people are busy with holiday parties and other activities. However, it is the time of year when we feel thankfulness in the air and want to reach out to others who may be in need.

This is where Operation Round-Up comes in. By rounding up your Sawnee EMC electric bill to the next highest dollar, you can help a local charity stock their food pantry, help

---

*It is the time of year when we feel thankfulness in the air and want to reach out to others who may be in need.*

---

provide prescription medicine for the elderly, or you could even help purchase items for foster children in your area. The possibilities are endless.



Please take the time to sign up for Operation Round-Up on a reoccurring monthly basis or consider making a one-time donation on your December Sawnee EMC electric bill.

For more information, details or to sign up for Operation Round Up, you can go to [www.sawnee.com/oru](http://www.sawnee.com/oru). 100% of the money that is rounded up will go directly to the people that need it most, right here locally.

Thank you for your time, your consideration of this worthy program and for being a member of Sawnee EMC.

*Happy holidays and blessings to you and yours!*



# TAKE THE **CHILL** OUT OF WINTER BILLS

Between holiday parties, decorations, colder days, and longer nights... electric bills tend to climb up during the winter. Please review these ways to save energy when the temperature drops.

- ❄️ **Lower your thermostat to 68 degrees (or lower):** If you turn the heat down by just one degree, you can save up to 5 percent on heating costs. Consider a programmable thermostat that you can set to a lower temperature when the home is empty and increase the setting before you get back home.
- ❄️ **Adjust blinds and curtains:** Keep them open to let in sunlight during the day, and close at night to keep heat inside and protect from drafts.
- ❄️ **Reduce hot water temperatures:** Heating water accounts for 12 percent of the average home's energy usage. Set your water heater's thermostat to 120 degrees or lower—that's usually sufficient for a household's hot-water needs.
- ❄️ **Seal and insulate:** This is the best way to keep heat in and air out. Areas that may need sealing include corners, cracks, door frames, and windows.
- ❄️ **Free your vents:** HVAC (heating, ventilation, and air conditioning) systems will have to work twice as hard if vents are blocked by rugs, furniture, or doors. Keep vents clear for proper air flow.
- ❄️ **Keep food cool:** Don't make your fridge work too hard. A temperature set between 34 and 37 degrees Fahrenheit is usually ideal.
- ❄️ **A special holiday tip:** Use LED lights to decorate. They're up to 75 percent more energy efficient than traditional incandescent lights and last much longer—remember to check for an ENERGY-STAR rating before you buy.

For more ways to save energy this winter, visit our Energy Center at [www.sawnee.com/energy](http://www.sawnee.com/energy), contact a member of our Energy Services Department at 770-887-2363 or via email at [marketing@sawnee.com](mailto:marketing@sawnee.com).



*Best wishes*

for a wonderful holiday season and Happy New Year. You can view Sawnee EMC's holiday eCard at [www.sawnee.com/holiday](http://www.sawnee.com/holiday). Thank you for being a member of Sawnee EMC and allowing us to serve your electric needs.

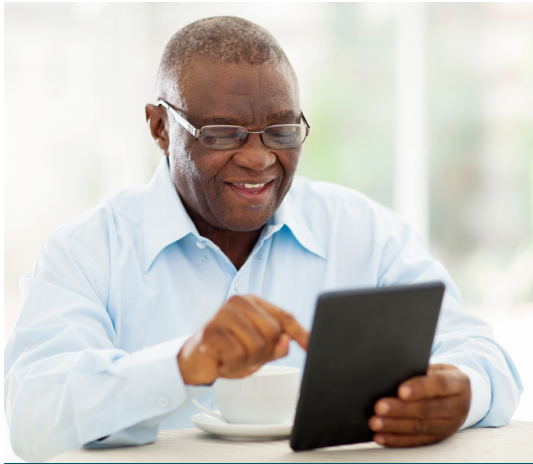


**Highest in Customer  
Satisfaction Among  
Cooperatives"**

—J.D. Power

For J.D. Power 2018 award information, visit [jdpower.com/awards](http://jdpower.com/awards).

# WITH SMARTHUB... YOU HAVE THE POWER



You can access your Sawnee SmartHub account online at [www.sawnee.com](http://www.sawnee.com) or through the free Android and iOS apps. Sign up, get the app and take control of your electric account at [www.sawnee.com](http://www.sawnee.com).

Sawnee EMC's SmartHub application provides you with tools to help you take control of your electric account. SmartHub is our private, easy to access, online portal that allows you to check and pay your bill, sign up for email and text alerts, monitor your energy usage, report an outage and contact Sawnee. It is a "one stop shop" for all your Sawnee EMC electric account needs.

A popular use of SmartHub is the ability to track your energy usage. Through your safe and secure SmartHub profile, you can monitor your hourly, daily, monthly and annual energy usage. Keeping a consistent watch on how much electricity you are using is one of the best ways to decrease your electric usage, and it virtually eliminates "sticker shock" when your bill arrives.

The notifications setting keeps you up to date with information from Sawnee. You can set up email and text notifications that alert on power outages, billing, energy use and other events. All of this is at your fingertips!

For more information contact our Customer Call Center at 770-887-2363, text 678-999-8124 or visit [www.sawnee.com](http://www.sawnee.com).

## Here's WATTS Cookin' Chocolate Marshmallow Frosted Cookies

### Ingredients:

1 pouch Betty Crocker Double Chocolate Chunk  
Cookie Mix  
 $\frac{1}{4}$  cup vegetable oil

2 tbsp. water

1 egg

12 large marshmallows, cut in half

*Favorite frosting - cream cheese frosting works well*

### Instructions:

Heat oven to 350 degrees. In a large bowl, combine cookie mix, oil, water and egg until soft dough forms. On an ungreased cookie sheet, drop dough by rounded tablespoon about 2 inches apart. Bake seven minutes. Remove from oven and press  $\frac{1}{2}$  of marshmallow on top of cookie. Bake for another 1-2 minutes or until marshmallow begins to soften. Cool 2 minutes and remove to baking rack. Allow cookies to cool completely. Once cool, spread frosting over each cookie, covering marshmallow. Allow frosting to set and then store cookies in refrigerator.



👉 Thanks to Lisa Ramsay for the recipe! Do you have a recipe to share with us? If we print it, we'll credit your account \$5.00. Send your favorite recipe to [marketing@sawnee.com](mailto:marketing@sawnee.com).