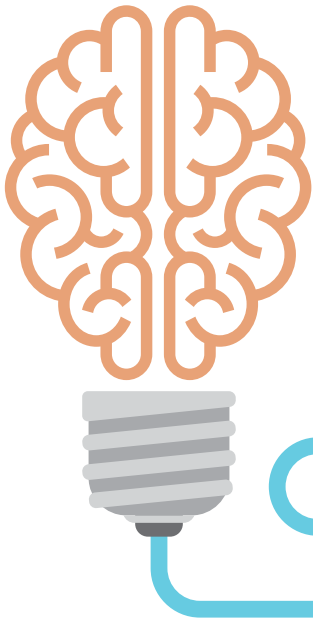
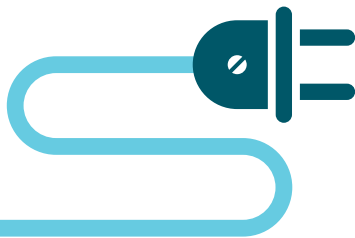


# THE SAWNEE HIGHLINER

Volume 37 • Issue 8



## THE POWER OF USING ENERGY WISELY



As members of Sawnee EMC, you play a part in making the Cooperative successful. When we work together, using

energy wisely and saving money go hand in hand. And with Sawnee's helpful energy efficient management resources, doing both is easier than you think.

You can start by taking a room-by-room walkthrough with our Home Energy Adventure, available at [www.sawnee.com](http://www.sawnee.com), and learn how simple, responsible energy use practices can add up to big savings. You can also download Sawnee's app to your smart phone or tablet to view your hourly and daily energy usage. Visit our website ([www.sawnee.com/energy](http://www.sawnee.com/energy)) and discover how much your appliances use, read quick tips about how you can make low cost – or no cost – upgrades around your home and utilize our interactive energy calculator to reduce energy consumption.

When it comes to using energy wisely, no job is too small. When we all work together for a common goal, the benefits we reap are countless.

Plug in to the power of your Sawnee EMC membership at [www.sawnee.com](http://www.sawnee.com).

### CONTACT US

#### Web Address & Email:

[www.sawnee.com](http://www.sawnee.com)  
[customerservice@sawnee.com](mailto:customerservice@sawnee.com)

#### Business Office Hours:

Mon. - Fri. 8:00 a.m. - 5:00 p.m.

#### Physical Address:

543 Atlanta Highway  
Cumming, GA 30040

#### Customer Call Center:

Mon. - Fri. 7:00 a.m. - 9:00 p.m.

Sat. 8:00 a.m. - 5:00 p.m.

Phone: (770) 887-2363

Fax: (678) 947-3368

Text: (678) 999-8124

TDD: (770) 781-4271



### QUOTABLE QUOTE

**Tell me and I forget. Teach me and I remember. Involve me and I learn."**

— Benjamin Franklin

*This institution is an equal opportunity provider and employer.*

# BEAT THE SUMMER HEAT



Beat the summer heat and trim your power bill with these cool energy saving ideas:

- **Set the thermostat to 78 degrees or higher.** Each degree setting below 78 can result in a 5 to 7% increase in energy costs.
- **Close shades and drapes during the day** to block out sunlight which can heat your home and cause your AC unit to work harder.
- **Use ceiling fans.** Turn up the thermostat several degrees (causing the AC to operate less) and operate fans only when you are in the area of their airflow. Remember, fans cool people, not rooms.

- **Clean or replace filters.** Dirty or clogged filters cause the cooling system to use more energy and decrease the comfort level of your home.
- **Limit window and door openings.**
  - In hot weather, avoid running the dryer during the heat of the day.
  - **Plant trees and shrubs to provide shade** of the east, south and west sides of your home. Evergreen trees and shrubs can provide a windbreak on the north side.

Questions? Contact Sawnee EMC's Energy Services Team at 770-887-2363 or via email at [marketing@sawnee.com](mailto:marketing@sawnee.com).



## Switch Today and Save With True.

**Truly Great Service. Truly Low Rates.** That is what True Natural Gas stands for. For over a decade, they have provided their customers with the best in natural gas—friendly service, easy-to-understand bills, and some of the lowest rates in the state. Find out for yourself today. Sign up with Sawnee's preferred natural gas marketer!



Call 770-887-2363 to switch to True Natural Gas



*Sawnee EMC is not a certified natural gas marketer in the state of Georgia, but actively promotes the natural gas services of True Natural Gas, the certified natural gas marketer, as a value-added service to its members.*

# YOU HAVE THE POWER with Prepaid Metering

Prepaid Metering is as simple as it sounds... participating members pay for their electricity before they use it, then the credit decreases as you use electricity. If you think about it, prepaid metering is virtually the same as putting gas in your car. Say you have \$30 to spend on gas for the week. You drive to the station, pump in \$30 worth, pay for it and drive off. As you drive throughout the week, you monitor your gas gauge and make sure that each trip is necessary. As you drive throughout the week, you monitor your gas gauge and make informed decisions on when and how much gas is needed.

Now let's transfer that analogy to a Sawnee prepaid metering account. With traditional billing, you get a bill after you have used the electricity. Sometimes it comes as a shock. "How could I possibly have used so much electricity?" Prepaid metering is designed to ease and hopefully eliminate the end of the month bill surprise.

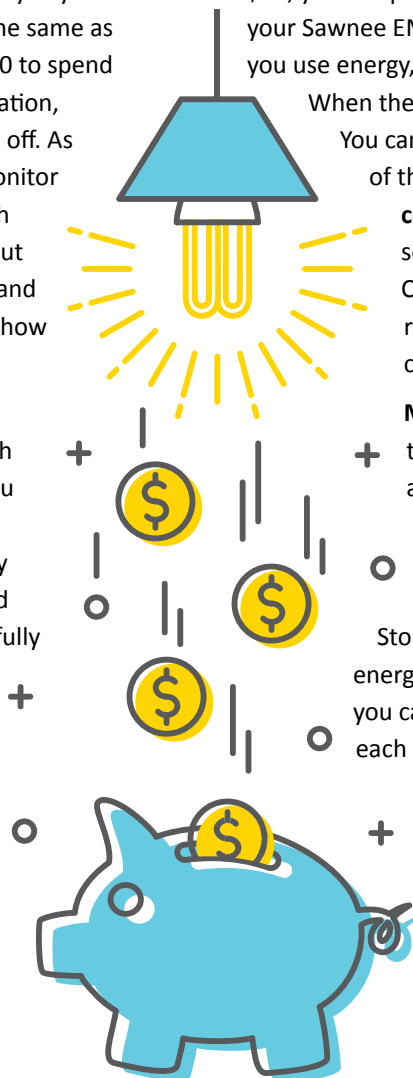
**No late fees, deposits or reconnect fees required.** Unlike traditional residential billing, Sawnee's Prepaid Metering Program does not require an account deposit. Moreover, Prepaid Metering accounts are not assessed a late payment penalty or a penalty for disconnects or reconnects.

**Take control, enjoy the convenience.** The process is simple. After you make your initial payment of at least \$40, you can put as much or as little money as you want in your Sawnee EMC Prepaid Metering Program account. As you use energy, your account credit balance goes down. When the funds run out, the electricity does, too.

You can add money to your account at any time of the day or night by going to [www.sawnee.com](http://www.sawnee.com), using our 24-hour automated phone service, or by visiting our 24-hour kiosks in Cumming. Your power will be automatically restored and, best of all, you won't be charged a reconnection fee.

**Monitor what you use and spend.** You can track your energy usage and monitor your account balance online using our SmartHub online gateway or by downloading the Sawnee EMC SmartHub app for your smart phone or tablet from the iTunes App Store or from Google Play. By monitoring your energy use and adjusting your energy habits, you can reduce the amount of electricity you use each day and save money on your energy bill.

**Ready to learn more?** Visit our Prepaid Metering website at [www.sawnee.com/prepay](http://www.sawnee.com/prepay) for additional information, including "Frequently Asked Questions." If you decide that Prepaid Metering is right for you, contact our Customer Call Center at 770-887-2363.





## MAKE PLANS TO ATTEND THE 79TH ANNUAL MEETING OF MEMBERS

Please mark your calendar for the 2017 Sawnee EMC Annual Meeting of Members, which will be held on Saturday, October 7th at the cooperative's headquarters located at 543 Atlanta Highway in Cumming. Registration will begin at 8:00 a.m. and the Business Session is scheduled for approximately 10:20 a.m. Many activities are planned for your enjoyment and benefit on this day. Here is a "sneak peek" at what you can expect at this year's annual meeting:

- **FREE HEALTH SCREENINGS** – Northside-Forsyth Hospital staff will be on site.
- **EXHIBITS ON ENERGY EFFICIENCY** – Learn about low cost ways to lower your monthly energy usage.
- **CONTINENTAL BREAKFAST** – Enjoy delicious homemade biscuits, pastries, hot coffee, etc.
- **KID'S ACTIVITIES** – Bring the children or grandchildren! There will be games and fun for children of all ages.
- **LIVE ENTERTAINMENT** – Enjoy a local gospel group, barbershop singers, and a school choir.
- **REPORT OF COOPERATIVE'S ACTIVITIES** – Important information about the day-to-day operations of Sawnee EMC will be presented.
- **DOOR PRIZES** – Don't miss your chance to win one of our many prizes!

All Sawnee EMC members of record as of September 7, 2017 will be mailed an official notice of the 2017 Annual Meeting on September 15, 2017. If you have any questions, please contact our Customer Call Center at 770-887-2363 or via email at [customerservice@sawnee.com](mailto:customerservice@sawnee.com). We look forward to seeing you there!

## Here's WATTS Cookin' Kentucky Spoon Bread

### Ingredients:

- |   |  |
|---|--|
| <i>1 stick butter, melted</i>           | <i>1 cup sour cream</i>                |
| <i>1 can creamed corn</i>               | <i>2 eggs, slightly beaten</i>         |
| <i>1 can whole kernel corn, drained</i> | <i>1 (8 oz.) Jiffy Corn Muffin Mix</i> |

### Instructions:

Combine melted butter, creamed corn and whole kernel corn and mix well. Add sour cream and eggs until well combined. Stir in Jiffy Mix. Pour into a 1.5 quart buttered glass casserole dish. Bake at 350 degrees for 35 minutes. If center is soft, bake for an additional five minutes.



👉 Thanks to Marilyn Hunt for the recipe! Do you have a recipe to share with us? If we print it, we'll credit your account \$5.00. Send your favorite recipe to [marketing@sawnee.com](mailto:marketing@sawnee.com).