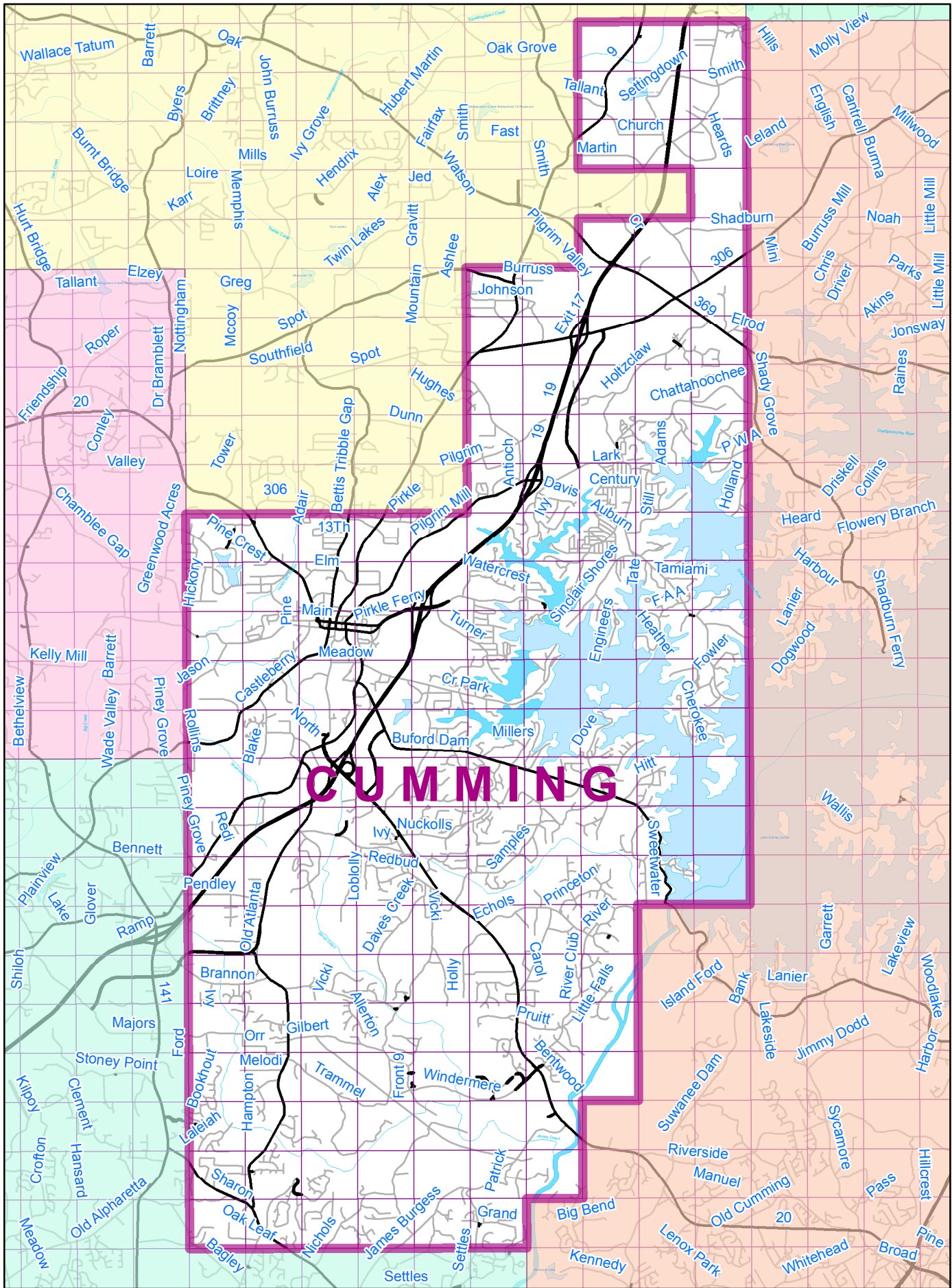


**Sawnee Electric Membership Corporation
Directorate District Boundary Identification**



CUMMING

CUMMING DISTRICT #3



IMPORTANT NOTICE:
The information on this map as it relates to the requirements found in Section 4.03 of Sawnee EMC's Bylaws, dated March 10, 2011, is a representation of that section and is not exact. Specific questions as to which S EMC accounts are located within a specific S EMC Director District should be directed to the Office of the President and CEO. THIS IS ONLY A REPRESENTATION OF THE INFORMATION FOUND IN THAT SECTION.



Sawnee EMC
Copyright: 2015

1 in = 1 Miles